



RV Inspection Report

Prepared for: Customer Customer

RV Location:

9024 US Hwy 175, Athens, TX 75751



2018 Tiffin Allegro Red 37PA

**Inspection Date / RV Model:
2018 Tiffin Allegro Red 37PA**

VIN Number: xxxxxxxxxxxxxxxxxxxxxx

BluCat RV Services LLC

David A. Gahafer
10006 Evening Star Drive
Louisville, KY 40272
502-689-9582



Table of Contents

- Cover Page
- Table of Contents
- LIFE SAFETY ISSUE
- MINOR ISSUE
- NOTICE / COMMENT
- Intro Page
- 1 Vehicle Information
- 2 Roof Exterior
- 3 Front Windshield
- 4(A) Front Cap / Wall
- 4(B) Curbside - Sidewall
- 4(C) Streetside Sidewall
- 4(D) Rear Cap / Wall
- 5 Entrance Doors
- 6(A) Main Awning Front
- 6(B) Door Awning
- 7(A) Curbside Front Slideout
- 7(B) Curbside Rear Slideout
- 7(C) Streetside Rear Slideout
- 7(D) Streetside Front Slideout
- 8(A) Front Wheel Assembly - Curbside
- 8(B) Drive Axle Wheel Assembly - Curbside Inside
- 8(C) Drive Axle Wheel Assembly - Curbside Outside
- 8(D) Drive Axle Wheel Assembly - Streetside Outside
- 8(E) Drive Axle Wheel Assembly - Streetside Inside
- 8(F) Front Wheel Assembly - Streetside
- 9 Exterior Chassis and Undercarriage
- 10 Engine, Radiator and Transmission
- 11 Leveling System and Components

12 12-Volt DC Chassis Lights

13 Electrical System 120-Volt AC and 12-Volt DC

14 Water Systems

15 Propane Tank, Lines and Connections

16 Appliances: Kitchen

17 Appliances: Other

18(A) Air Conditioner #1

18(B) Air Conditioner #2

18(C) Air Conditioner #3

19 Interior

20 Furniture

21(A) TV #1

21(B) TV #2

21(C) TV #3

21(D) TV #4

21(E) Blu Ray #1

LIFE SAFETY ISSUE



Customer
Customer Customer
Inspection Date / Year, Make, Model:
2018 Tiffin Allegro Red 37PA
VIN Number:
XXXXXXXXXXXXXXXXXXXXXXX

The following items indicate that the condition is a LIFE SAFETY ISSUE. It is recommended that a qualified RV technician correct the identified issue, and before the unit is occupied.

15. Propane Tank, Lines and Connections


15.2 LP Detector

Poor

 Failed to alarm on butane

15.3 Carbon Monoxide Detector

Poor

 Failed to alarm on butane

Prepared Using HomeGauge <http://www.HomeGauge.com> : Licensed To David A. Gahafer

MINOR ISSUE



Customer
Customer Customer
Inspection Date / Year,Make,Model:
2018 Tiffin Allegro Red 37PA
VIN Number:
XXXXXXXXXXXXXXXXXXXXXXX

The following items indicate that the condition is a MINOR ISSUE. It is recommended that a qualified RV technician correct the identified issue as needed.

7(A) . Curbside Front Slideout

7.2.A Seals, Sweeps and Gaskets

Fair

-  (1) Owner states slideout needs repair to allow sweeps to operate as designed.
-  (2) Owner states slideout needs repair to allow sweeps to operate as designed.

7.5.A Slideout Operation and Alignment

Fair

-  Owner states slideout needs repair to correct alignment.

7.8.A Slideout Awning Topper Fabric

Fair

-  Curbside front slideout topper fabric wrinkled.

7(D) . Streetside Front Slideout

7.2.D Seals, Sweeps and Gaskets

Fair

-  Streetside slideout sweep seals do not move out fully.

7.5.D Slideout Operation and Alignment

Fair

-  Streetside slideout sweep seals do not move out fully.

Prepared Using HomeGauge <http://www.HomeGauge.com> : Licensed To David A. Gahafer

NOTICE / COMMENT



BluCat RV Services LLC

Customer

Customer Customer

Inspection Date / Year, Make, Model:

2018 Tiffin Allegro Red 37PA

VIN Number:

XXXXXXXXXXXXXXXXXXXXXXX

The following items indicate that the condition is a NOTEWORTHY COMMENT.

13. Electrical System 120-Volt AC and 12-Volt DC

13.26 GFCI Trip Testing - All Receptacles Behind Electronics and Appliances

Not Inspected

 Receptacles behind appliances not tested due to lack of accessibility.

13.41 12 Volt DC House Battery - Water Level in Batteries

Not Inspected

 Limited access to battery cells to check water level.

Prepared Using HomeGauge <http://www.HomeGauge.com> : Licensed To David A. Gahafer

Inspection Date / Year, Make, Model : 2018 Tiffin Allegro Red 37PA	Time: 08:00 AM	VIN Number: XXXXXXXXXXXXXXXXXXXX
RV Location: 9024 US Hwy 175, Athens, TX 75751	Customer: Customer Customer	

This time sensitive document was prepared for the client listed on the Cover Page of this report. Any reproduction, use, or resale of this document by individuals other than who is listed on the report cover page, or their assigns, is not supported by the inspector and company.

Comment Key or Definitions

The following definitions of comment descriptions represent this inspection report. All comments by the inspector should be considered before purchasing this RV home. Any recommendations by the inspector to repair suggests a second opinion or further inspection by a qualified RV technician. All costs associated with further inspection fees and repair or replacement of item, component or unit should be considered before you purchase.

Acceptable (A) = A visually observed item, component or unit and if no other comments were made then it appeared to be performing its intended function with little or no deterioration visible.

Fair (F)= The item or its components is not in need of immediate repair as it is performing its intended function but deterioration is visible. Some opinions may elect to repair or replace this item now while others may wait.

Poor (P) = The item, component or unit is not functioning as intended and replacement is recommended, or needs further evaluation by a qualified RV technician.

Not Inspected (NI)= The item, unit or component was not inspected, and no representations were made as to whether or not it was functioning as intended and a statement for the reason for not inspecting may be made.

Not Present (NP) = This item, component or unit is not in this RV.

NRVIA Standards of Practice

Purpose, Scope and General Statements

- 1 – The purpose of the Standards of Practice is to establish a uniform standard for the companies RV Inspector to inspect and report in an objective manner the conditions of a Recreational Vehicle and its components.
- 2 – The Standards describe the components, and systems included in an RV Inspection.
- 3 – The Standards apply to motorized and towable types of RVs as defined by the RV Industry.
- 4 – The Standards apply to a visual inspection of those areas, components and systems that are readily accessible to determine at the time of inspection that they are performing their intended function without regard to life expectancy.
- 5 – The purpose of the RV inspection is to identify visible and operational defects as permitted by the current conditions that in the judgment of the RV Inspector will adversely affect the function or integrity of the items, components and systems of the Recreational Vehicle.
- 6 – RV Inspections performed under the Standards of Practice are basically visual and rely upon the opinion, judgment, education and experience of the RV Inspector and are not intended to be technically exhaustive.

7 – RV Inspections shall be performed in a time period sufficient to allow compliance with the provisions of the NRVIA Standards of Practice.

8 – RV Inspections performed under the Standards shall not be construed as being a compliance inspection of any code, governmental regulation or manufacturer’s installation instructions or procedures. In the event a law, statute or ordinance prohibits a procedure recommended in the Standards, the RV Inspector is relieved of the obligation to adhere to the prohibited part of the Standards.

9 – RV Inspections performed under the Standards are not an expressed, implied warranty or guarantee of adequacy, performance or useful life of any RV, any of its components or systems.

10 – Only those items specifically listed on the RV Inspection Report will be included in the RV Inspectors evaluation.

11 – The RV Inspector shall report any system or component included in the Standards of Practice which were present at the time of the RV Inspection but were NOT inspected and provide the reason they were not inspected.

General Limitations and Exclusions

1 – RV Inspections performed under the companies Standards of Practice exclude any items concealed or not readily accessible to the RV Inspector. The RV Inspector is not required to move furniture, personal or stored items. Lifting floor covering, accessing interior walls and ceilings in which could damage or destroy the components or systems being evaluated is not part of the RV Inspection.

2 – The determination of the presence of damage caused by insects or water is only to be evaluated by observation with an opinion being rendered by RV Inspector that is to make the client aware of the issue.

3 – Excluded from the Standards of Practice is the determination of indoor air quality of the RV and it’s consequence of physical damage, toxicity, odors, waste products and noxiousness.

4 – The RV Inspection and report are opinions only that are based upon the visual observation of the existing conditions of the RV at the time of the RV Inspection. The report is not intended to be or construed as a guarantee, warranty or any form of insurance. The RV Inspector will not be responsible for any repairs or replacement with regard to the RV or its contents.

5 – The RV Inspector is not required to enter any premises that visibly show a threat to the safety of the RV Inspector or others nor inspect any area or component that poses a danger to the RV Inspector or others.

6 – The NRVIA Certified RV Inspector will inspect and report on the RV items listed in this report and their condition during the RV Inspection. Any additional items of inspection will be dependent upon any agreements that are made between the client and the RV Inspector.

Weather:

Cloudy windy and cool, Snow

Type of Inspection:

Seller: RV Inspection for Potential Buyer

Style of RV:

Class A Diesel Pusher

RV Status:

Occupied at the Time of the Inspection

Client Is Present:

Yes, at the beginning of the inspection, Yes, at the end of the inspection

Start Temperature:

60 degrees

1. Vehicle Information

Styles & Materials

VIN Number:

Photo Included
VIN #: : xxxxxxxxxxxxxxxx

VIN Location:

Door Panel

RVIA / Canadian Seal Number:

Located by Entrance Door
Seal Number / Other Info : xxxxxxxxxxxx

Gross Vehicle Weight Rating (GVWR):

From Data Plate
Specify in lbs or kg : 32000 LBS

Brand of RV:

Manufacturer's Brand Name
Brand Name : Tiffin

Model Number:

RV Designation/Floorplan
Model Number : Allegro Red 37PA

Manufacturer Name and Location:

Tiffin
Location: City, State : Red Bay, Alabama

Date of Manufacturer:

April
Year : 2018

Chassis Manufacturer Name:

Freightliner
Name : Classic

Chassis Manufacturer Date:

March
Year : 2017

State Inspection Sticker Current:

Yes
State of Inspection : Texas

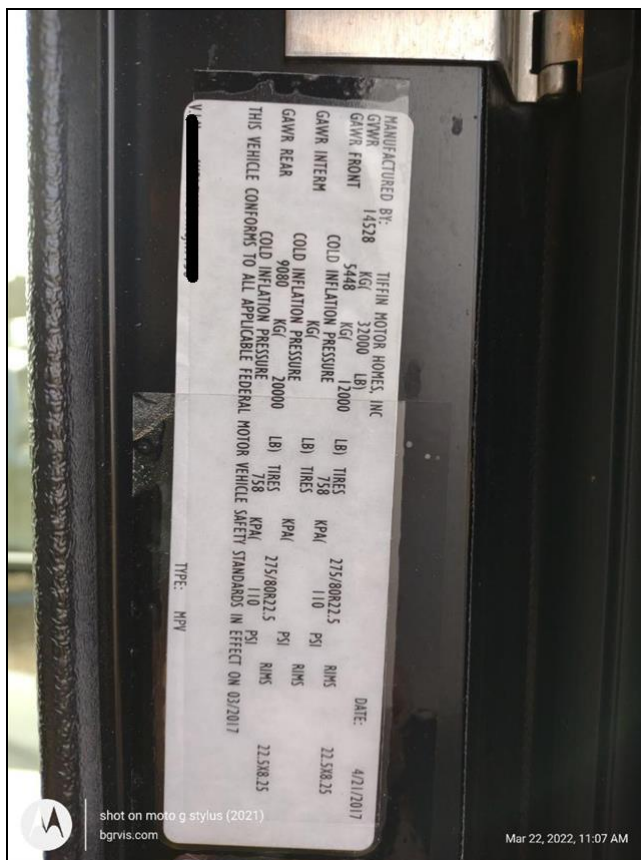
State License Plate Current:

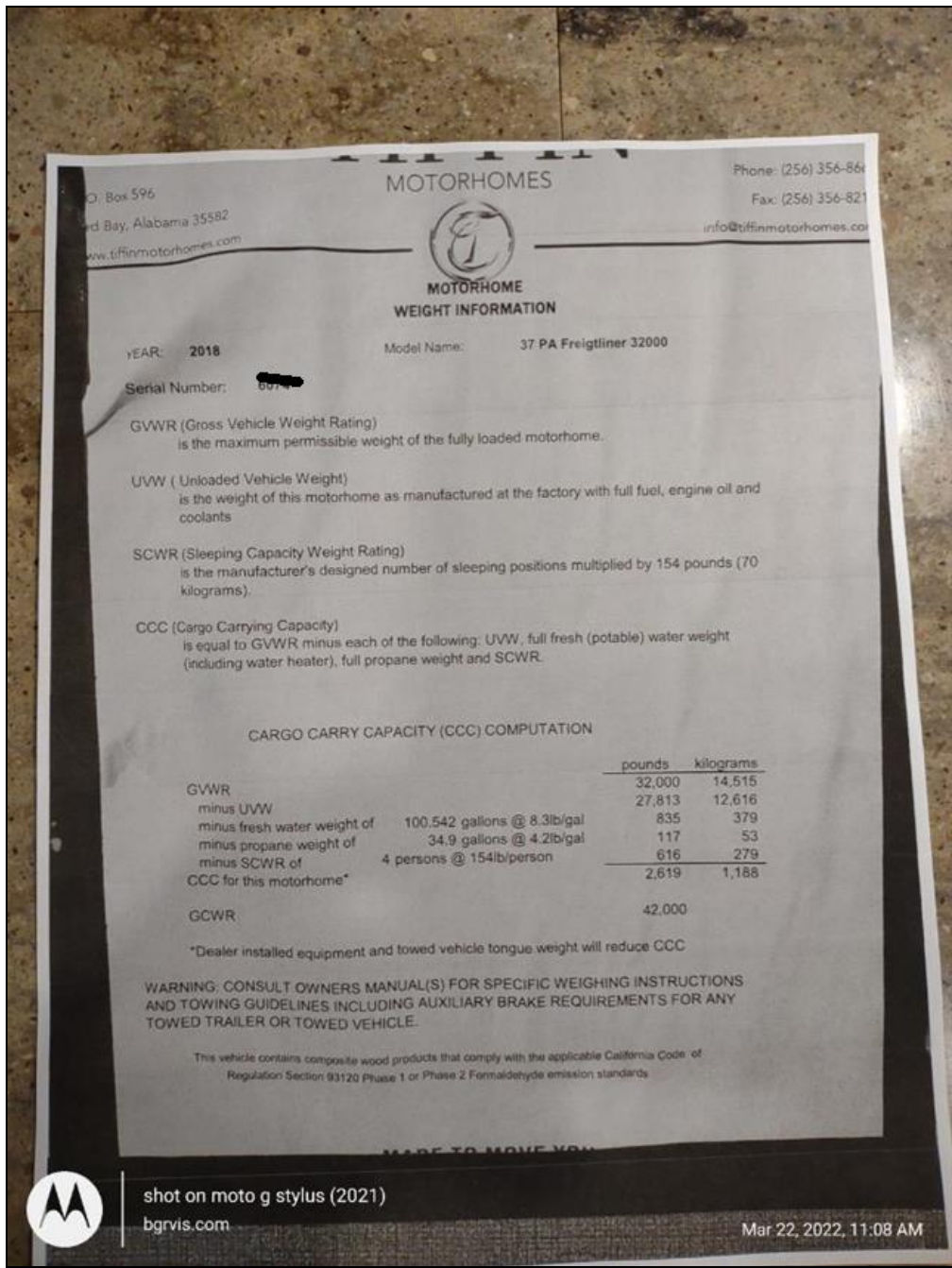
Yes
State and Plate Number : xxxxxx

Items

1.0 Vehicle Data

(1) Manufacturer's VIN Data Plate Photo





(2) RVIA Seal Photo



(3) Incomplete Chassis VIN Data Plate Photo



(4) State License Plate Photo



State License Plate

(5) State Inspection Sticker Photo



State Inspetio

(6) Build Sheet Photo



Rear to Front Roof Overview.

Styles & Materials

Roof Type:
Fiberglass

Number of Solar Panels:
None

Equipment Removed:
No

Areas of Possible Water Intrusion:
No

TV Antenna - Moves Up and Down:
Fixed

Roof Ladder Type:
Mounted

TV Antenna - Cleaned and Maintained:
Yes

Items

2.0 Roof Condition

Acceptable

(2) Roof Overview Rear to Front



Roof Overview Rear to Back

2.1 Front Cap, Joints and Seals

Acceptable

(1) Front Cap, Joints and Seals Overview.



Front Cap, Joints and Seals Overview



Front Cap. Joints and Seals.

(2) Front Cap, Joints and Seals Overview.



Front Cap, Joints and Seals Overview.

(3) Front Cap, Joints and Seals Overview.



Front Cap, Joints and Seals Overview.

2.2 Trim Rail (Curbside)

Acceptable

2.3 Rear Cap, Joints and Seals

Acceptable

2.4 Trim Rail (Streetside)

Acceptable

2.5 Vents - Powered (14 x 14)

Acceptable

Powered Roof Vent





Powered Roof Vent



Powered Roof Vent

2.6 Plumbing Vent Covers

Acceptable

Plumbing Vent Covers



Plumbing Vent Covers

2.7 Skylights

Acceptable

Skylight



Skylight

2.8 Air Conditioner #1 (Shroud)

Acceptable

Air Conditioner Exterior Coils Front

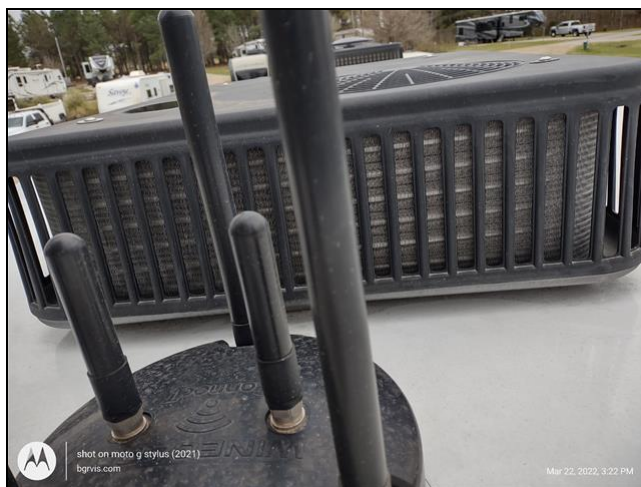


Air Conditioner Shroud Front

2.9 Air Conditioner #1 (Exterior Coils)

Acceptable

Air Conditioner Exterior Coils Front



Air Conditioner Exterior Coils Front

2.10 Air Conditioner #2 (Shroud)

Acceptable

Air Conditioner Shroud Middle



Air Conditioner Shroud Middle

2.11 Air Conditioner #2 (Exterior Coils)

Acceptable

Air Conditioner Exterior Coils Middle



Air Conditioner Exterior Coils Middle

2.12 Air Conditioner #3 (Shroud)

Acceptable

2.13

Air Conditioner #3 (Exterior Coils)

Acceptable

Air Conditioner Exterior Coils Rear



Air Conditioner Exterior Coils Rear

2.14 TV Antenna Exterior Roof Unit

Acceptable

2.15 Radio Antenna

Acceptable

2.16 Ladder - Roof Access

Acceptable

2.17 Air Horns

Acceptable

3. Front Windshield

Styles & Materials

Windshield Type:
Glass with No Frame

Items

3.0 Windshield Condition

Acceptable

3.1 Windshield Wiper Condition and Operation

Acceptable

3.2 Rear View Mirrors and Operation

Acceptable

3.3 Headlight Operation

Acceptable

3.4 Electric / Manual Interior Window Shade Operation

Acceptable

4(A) . Front Cap / Wall

Styles & Materials

Exterior Wall Surface Type:
Full Body Paint

Any Damage or Discoloration or Delamination?:
No

Windows:
Glass with Frame

Cargo Doors:
None

Items

4.0.A Sidewall Condition

Acceptable

4.1.A Paint and Decals

Acceptable

4.2.A Windows

Acceptable

4(B) . Curbside - Sidewall

Styles & Materials

Exterior Wall Surface Type:
Full Body Paint

Any Damage or Discoloration or Delamination?:
No

Windows:
Glass with Frame

Cargo Doors:
Doors with Keyed Slam Latch

Items

4.0.B Sidewall Condition

Acceptable

Curbside Sidewall



Curbside Sidewall

4.1.B Paint and Decals

Acceptable

4.2.B Windows

Acceptable

4.3.B Cargo/Access Doors

Acceptable

4(C) . Streetside Sidewall

Styles & Materials

Exterior Wall Surface Type:
Full Body Paint

Any Damage or Discoloration or Delamination?:
No

Windows:
Glass with Frame

Cargo Doors:
Doors with Keyed Slam Latch

Items

4.0.C Sidewall Condition

Acceptable

Streetside Sidewall



Streetside Sidewall

4.1.C Paint and Decals

Acceptable

4.2.C Windows

Acceptable

4.3.C Cargo/Access Doors

Acceptable

4(D) . Rear Cap / Wall

Styles & Materials

Exterior Wall Surface Type:
Full Body Paint

Any Damage or Discoloration or Delamination?:
No

Windows:
None

Cargo Doors:
None

Items

4.0.D Sidewall Condition

Acceptable

4.1.D Paint and Decals

Acceptable

5. Entrance Doors

Styles & Materials

Type of Entrance Door:
Fiberglass

Keyless Entry Door Lock System:
No

Keyed Door Lock / Deadbolt:
Yes

Keyed Door Lock / Deadbolt Functional:
Yes

Type of Step System:
Electric

Number of Steps:
Three

Grab Bar Type:
Grab Handle

Is the Interior Step Cover Present and Operational?:
Yes

Items

5.0 Door Condition

Acceptable

Entrance Door



Entrance Door

6(A) . Main Awning Front

Styles & Materials

Awning Material:
Vinyl

Operational Type:
Electric

Items

6.0.A Frame and Latching Mechanism

Acceptable

6.1.A Fabric Condition

Acceptable

6.2.A Awning Operation

Acceptable

6(B) . Door Awning

Styles & Materials

Awning Material:
Vinyl

Operational Type:
Electric

Items

6.0.B Frame and Latching Mechanism

Acceptable

6.1.B Fabric Condition

Acceptable

6.2.B Awning Operation

Acceptable

7(A) . Curbside Front Slideout

Styles & Materials

Slideout Roof Type:
Fiberglass

Slideout Drive System:
Hydraulic Piston

Items

7.0.A Slideout Roof

Acceptable

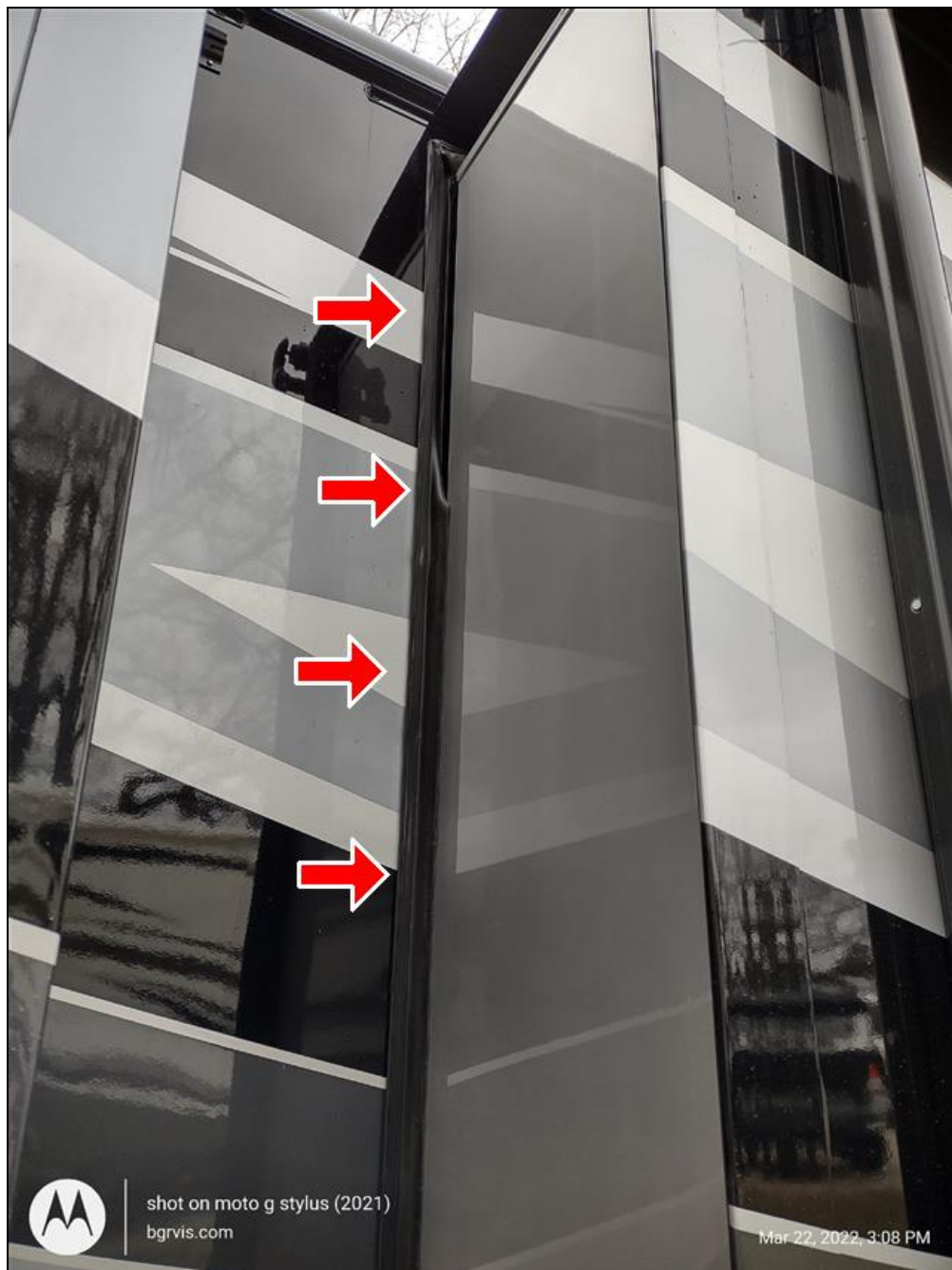
7.1.A Slideout T-Molding Trim

Acceptable

7.2.A Seals, Sweeps and Gaskets

Fair

- (1) Owner states slideout needs repair to allow sweeps to operate as designed.



Front Curbside Slideout Sweep Seal

- (2) Owner states slideout needs repair to allow sweeps to operate as designed.



Front Curbside Slideout Sweep Seal

7.3.A Slide Rail Gear Rack System

Acceptable

7.4.A 12-Volt DC Control and Switches

Acceptable

7.5.A Slideout Operation and Alignment

Fair

 [Owner states slideout needs repair to correct alignment.](#)

7.6.A Slideout Awning Topper Operation

Acceptable

7.7.A Slideout Awning Topper Frame & Latching Mechanism

Acceptable

7.8.A Slideout Awning Topper Fabric

Fair

 Curbside front slideout topper fabric wrinkled.



7(B) . Curbside Rear Slideout

Styles & Materials

Slideout Roof Type:
Fiberglass

Slideout Drive System:
Lippert Schwintek w/In-wall Electric Motor

Items

7.0.B Slideout Roof

Acceptable

7.1.B Slideout T-Molding Trim

Acceptable

7.2.B Seals, Sweeps and Gaskets

Acceptable

7.3.B 12-Volt DC Control and Switches

Acceptable

7.4.B Slideout Operation and Alignment

Acceptable

7.5.B Slideout Awning Topper Operation

Acceptable

7.6.B

Slideout Awning Topper Frame & Latching Mechanism

Acceptable

7.7.B Slideout Awning Topper Fabric

Acceptable

7(C) . Streetside Rear Slideout

Styles & Materials

Slideout Roof Type:
Fiberglass

Slideout Drive System:
Lippert Schwintek w/In-wall Electric Motor

Items

7.0.C Slideout Roof

Acceptable

7.1.C Slideout T-Molding Trim

Acceptable

7.2.C Seals, Sweeps and Gaskets

Acceptable

7.3.C 12-Volt DC Control and Switches

Acceptable

7.4.C Slideout Operation and Alignment

Acceptable

7.5.C Slideout Awning Topper Operation

Acceptable

7.6.C Slideout Awning Topper Frame & Latching Mechanism

Acceptable

7.7.C Slideout Awning Topper Fabric

Acceptable

7(D) . Streetside Front Slideout

Styles & Materials

Slideout Roof Type:
Fiberglass

Slideout Drive System:
Hydraulic Piston

Items

7.0.D Slideout Roof

Acceptable

7.1.D Slideout T-Molding Trim

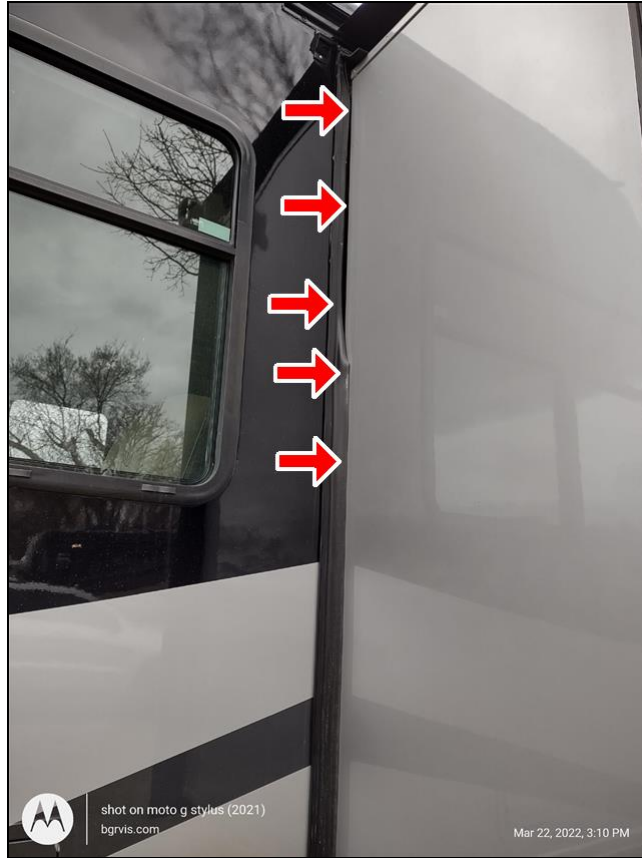
Acceptable

7.2.D

Seals, Sweeps and Gaskets

Fair

 Streetside slideout sweep seals do not move out fully.



7.3.D Slide Rail Gear Rack System

Acceptable

7.4.D 12-Volt DC Control and Switches

Acceptable

7.5.D Slideout Operation and Alignment

Fair

 Streetside slideout sweep seals do not move out fully.

7.6.D Slideout Awning Topper Operation

Acceptable

7.7.D Slideout Awning Topper Frame & Latching Mechanism

Acceptable

7.8.D Slideout Awning Topper Fabric

Acceptable

8(A) . Front Wheel Assembly - Curbside

NOTE: The National Transportation Safety Board (NTSB) and some tire manufacturers are recommending that all tires older than six years should be replaced, regardless of their condition.

Styles & Materials

Tire Brand:
Michelin

Tire Size:
Other
Other Size : 275/80 R22.5

DOT Date:
Visually Verified
Enter wwy : 0617

Load Capacity:
Single Tire Rating
Enter lbs or kg Weight Rating : 2800 LBS

Load Range:
G

Maximum Air Pressure:
110 PSI

Current Air Pressure in Tire:
Tire Gauge Reading (psi)
PSI : 110.02

Valve Extensions Installed?:
No

Tire Pressure Monitors Installed?:
No

Items

8.0.A Tire Condition

Acceptable

Curbside Front Wheel



Curbside Front Wheel

8.1.A Tire Tread Condition

Acceptable

8(B) . Drive Axle Wheel Assembly - Curbside Inside

NOTE: The National Transportation Safety Board (NTSB) and some tire manufacturers are recommending that all tires older than six years should be replaced, regardless of their condition.

Styles & Materials

Tire Brand:
Michelin

Tire Size:
Other

DOT Date:
Visually Verified

Other Brand : I'm

Other Size : 275/80R22.5

Enter wwy : 0617

Load Capacity:

Dual Tire Rating
Enter lbs or kg Weight Rating : 5675 LBS

Load Range:

G

Maximum Air Pressure:

110 PSI

Current Air Pressure in Tire:

Tire Gauge Reading (psi)
PSI : 110 PSI

Valve Extensions Installed?:

No

Tire Pressure Monitors Installed?:

No

Items

8.0.B Tire Condition

Acceptable

8.1.B Tire Tread Condition

Acceptable

8(C) . Drive Axle Wheel Assembly - Curbside Outside

NOTE: The National Transportation Safety Board (NTSB) and some tire manufacturers are recommending that all tires older than six years should be replaced, regardless of their condition.

Styles & Materials

Tire Brand:

Michelin

Tire Size:

Other
Other Size : 275/80R22.5

DOT Date:

Visually Verified
Enter wwy : 0617

Load Capacity:

Dual Tire Rating
Enter lbs or kg Weight Rating : 2575 LBS

Load Range:

G

Maximum Air Pressure:

110 PSI

Current Air Pressure in Tire:

Tire Gauge Reading (psi)
PSI : 110 PSI

Valve Extensions Installed?:

Yes

Tire Pressure Monitors Installed?:

No

Items

8.0.C Tire Condition

Acceptable

8.1.C Tire Tread Condition

Acceptable

8(D) . Drive Axle Wheel Assembly - Streetside Outside

NOTE: The National Transportation Safety Board (NTSB) and some tire manufacturers are recommending that all tires older than six years should be replaced, regardless of their condition.

Styles & Materials

Tire Brand:

Michelin

Tire Size:

Other
Other Size : 275/80R22.5

DOT Date:

Visually Verified
Enter wwy : 0617

Load Capacity:

Dual Tire Rating
Enter lbs or kg Weight Rating : 2575 LBS

Load Range:

G

Maximum Air Pressure:

110 PSI

Current Air Pressure in Tire:
Tire Gauge Reading (psi)
PSI : 110 PSI

Valve Extensions Installed?:
Yes

Tire Pressure Monitors Installed?:
No

Items

8.0.D Tire Condition

Acceptable

8.1.D Tire Tread Condition

Acceptable

8(E) . Drive Axle Wheel Assembly - Streetside Inside

NOTE: The National Transportation Safety Board (NTSB) and some tire manufacturers are recommending that all tires older than six years should be replaced, regardless of their condition.

Styles & Materials

Tire Brand:
Michelin

Tire Size:
Other
Other Size : 275/80R22.5

DOT Date:
Visually Verified
Enter wyyy : 0617

Load Capacity:
Dual Tire Rating
Enter lbs or kg Weight Rating : 2575 LBS

Load Range:
G

Maximum Air Pressure:
110 PSI

Current Air Pressure in Tire:
Tire Gauge Reading (psi)
PSI : 110 PSI

Valve Extensions Installed?:
Yes

Tire Pressure Monitors Installed?:
No

Items

8.0.E Tire Condition

Acceptable

8.1.E Tire Tread Condition

Acceptable

8(F) . Front Wheel Assembly - Streetside

NOTE: The National Transportation Safety Board (NTSB) and some tire manufacturers are recommending that all tires older than six years should be replaced, regardless of their condition.

Styles & Materials

Tire Brand:
Michelin

Tire Size:
Other
Other Size : 275/80R22.5

DOT Date:
Visually Verified
Enter wyyy : 0617

Load Capacity:
Single Tire Rating
Enter lbs or kg Weight Rating : 2800 LBS

Load Range:
G

Maximum Air Pressure:
110 PSI

Current Air Pressure in Tire:
Tire Gauge Reading (psi)
PSI : 110 PSI

Valve Extensions Installed?:
No

Tire Pressure Monitors Installed?:
No

Items

8.0.F Tire Condition

Acceptable

8.1.F Tire Tread Condition

Acceptable

9. Exterior Chassis and Undercarriage

The inspector will evaluate for signs of rust but will not make a determination of the severity of the rust. Pictures may be included to show what the inspector observed at the time of the inspection.

Note: Due to insurance restrictions, the motor home can **NOT** be driven by the inspector. Also, due to the lack of clearance under the motor home and safety concerns, the inspector will conduct the following visual inspections from the outer perimeter of the motor home.

Styles & Materials

Chassis and Frame - Did Inspector Check for Visible Signs of Rust?:
Yes

Chassis and Frame - Did Inspector Check for Visible Signs of Bent or Damaged Components?:
Yes

Chassis and Frame - Did Inspector Check for Visible Signs of Excessive Wear?:
Yes

Chassis and Frame - Did Inspector Check for any Visible Signs of Excess Oil Present?:
Yes

Running Gear - Did Inspector Check for Visible Signs of Scraping or Drag Damage?:
Yes

Running Gear - Did Inspector Check for Visible Signs of Damage from Tire Failure?:
Yes

Running Gear - Did Inspector Check for Hydraulic Hose Leaks?:
Yes

Number of Axles:
Two

Front Axle Weight Rating:
Listed in lbs or kg
Weight Rating : 5443 LBS

Drive Axle Weight Rating:
Listed in lbs or kg
Weight Rating : 9072 LBS

Items

9.0 Chassis and Frame Condition

Acceptable

9.1 Shock Absorber System Condition

Acceptable

9.2 Running Gear (Axles, Springs, Rims, other Components)

Acceptable

9.3 Steering Components

Acceptable

10. Engine, Radiator and Transmission

Note: Due to insurance restrictions, the motor home can NOT be driven by the inspector. Also, due to the lack of clearance under the motor home and safety concerns, the inspector will conduct the following visual inspections from the outer perimeter of the motor home.



Engine radiator ,coolant, break fluid and air filter gauge.

Styles & Materials

Engine Brand:

Cummins
Other : CUM ISB6.7-360

Engine Model - HP:

Other

Engine Mileage:

Other
Enter Mileage : 27021 Miles

Dash Air Conditioner Temperature Reading:

F
Degrees : 50 Degrees

Dash Radio Operational:

Yes

Engine Type / Location:

Rear Diesel

Last Oil Change Recorded:

Yes
Date / Mileage : 10/25/2021
25251 Miles

Last Oil Filter Change Recorded:

Yes same date as oil change
Date / Mileage : 10/25/2021
25251 Miles

Last Fuel Filter Change Recorded:

Yes
Date / Mileage : 10/25/2021 25251 Miles

Exhaust Leaks:

No

Inspect for Oil Leaks:

Yes

Oil Pressure Reading:

Normal

Oil Analysis Performed: No	Oil Level on Dipstick: Normal	Engine Starts: Yes
Radiator Location: Rear	Coolant Analysis Performed: Yes	Coolant Fans Accessible: No
Cooling Fan(s) Operational: Yes	Cooling Fan Type: Belt Driven	Transmission Brand: Allison Other Brand : Allison 3000 MH Automatic Transmission
Inspect for Transmission Fluid Leaks: Yes	Transmission Analysis Performed: Yes	Transmission Oil Contaminated - Discolored: No
Transmission Fluid Level on Dipstick: Normal	Hitch Receiver Brand: Other Other Hitch : No name on hitch	Modifications to Hitch System?: No
Hitch Weight Rating: Class 3 (up to 8000 GTW) Other GTW : 8000 GTW	Pin Connector Type: 7 Pin	

Items

10.0 Engine Running Condition

Acceptable

10.1 Engine Compartment Cleanliness

Acceptable

10.2 Radiator Condition

Acceptable

10.3 Coolant Reservoir Condition

Acceptable

10.4 Radiator Hoses Condition

Acceptable

10.5 Hitch Receiver Condition

Acceptable

10.6 Connector (4-Pin or 7-Pin)

Acceptable

7-Pin Connector

11. Leveling System and Components

Styles & Materials

Leveling System Type: Air-Hydraulic	Leveling System Manufacturer: HWH Other	Inspect for Visible Signs of Damage: Yes
Ensure Jacks Extend and Retract Fully: Yes	Inspect for Leaks or Mechanical Issues: Yes	

Items

11.0 Leveling System Condition

Acceptable

12. 12-Volt DC Chassis Lights

Items

12.0 Front Clearance Lights

Yes

12.1 Rear Clearance Lights

Yes

12.2 Streetside - Marker Lights

Yes

12.3 Curbside - Marker Lights

Yes

12.4 Left Turn and Brake Light

Yes

12.5 Right Turn and Brake Light

Yes

12.6 Backup Lights

Yes

12.7 Utility Lights

Yes

12.8 Compartment Lights

Yes

12.9 Porch Lights

Yes

12.10 Security Lights

Yes

12.11 Waste Dump Lights

Yes

13. Electrical System 120-Volt AC and 12-Volt DC



Front mounted Onan 8000 watt Generator



Generator control panel



Generator identification label

Styles & Materials

Power Source:
50 Amp / 240 Volts AC

12-Volt DC Fuse Panel Box Condition:
Acceptable

Wires and Terminals Tight:
Solid Connection

GFCI Testing - Kitchen:
Pass

Power Converter - Verified:
Acceptable

Power Cord Condition:
Acceptable

Fuses Condition:
All Operational

GFCI Testing - Circuit Breaker Panel Box:
Not Present

Power Converter - AC On:
Operational Test
DC Voltage with Shore Power On :
14.0 DC Voltage

Generator - Brand:
Onan

Inside Electrical Panel Box Condition:
Acceptable

Fuse Connections Condition:
Good Connection

GFCI Testing - Bathroom:
Pass

Power Converter - AC Off:
Operational Test
DC Voltage with Shore Power Off :
13.0 DC Voltage

Generator - Model Number:
From Manufacturer's Label

Other : Onan 8HDKAK1046W Serial# C17016695

Model # : 8HDKAK1046W

Generator - Serial Number:
From Manufacturer's Label
Serial # : C17016695

Generator - Hours of Operation:
From Generator Meter
Hours : 289.2 Hours

Generator - Radiator Reservoir and Hoses Condition:
Acceptable

Generator - Transfer Switch:
Acceptable

Generator Voltage Output:
Voltage Measured Under 50 Percent Load
Voltage Reading in AC Volts : 120 Volts

Generator Frequency Output:
Frequency Measured Under Load
Frequency Reading in Hertz : 60 Hertz

Inverter - Brand:
Magnum

Inverter - Model:
From Manufacturer's Label
Model # : MS2000

Inverter - Serial:
From Manufacturer's Label
Serial # : T1-24309

Inverter - General Condition:
Acceptable

Inverter Voltage Output:
Voltage Measured Under 50 Percent Load
Voltage Reading in AC Volts: : 120 Volts

Inverter Frequency Output:
Frequency Measured Under Load
Frequency Reading in Hertz: : 60 Hertz

12-Volt DC Chassis Battery Condition:
Acceptable

12-Volt DC Chassis Battery Box Condition:
Acceptable

12-Volt DC Chassis Battery Cables and Terminals Condition:
Acceptable

12-Volt DC House Battery - Location:
Side Basement
Location of Battery Stack : On the Streetside

12-Volt DC House Battery - Box Condition:
Not Present
Extra Info : On Tray

12-Volt DC House Battery - Cables and Terminals Condition:
Acceptable

12-Volt DC House Battery - Water Level in Batteries:
Not Inspected
Extra Info : Limited Accessibility

Items

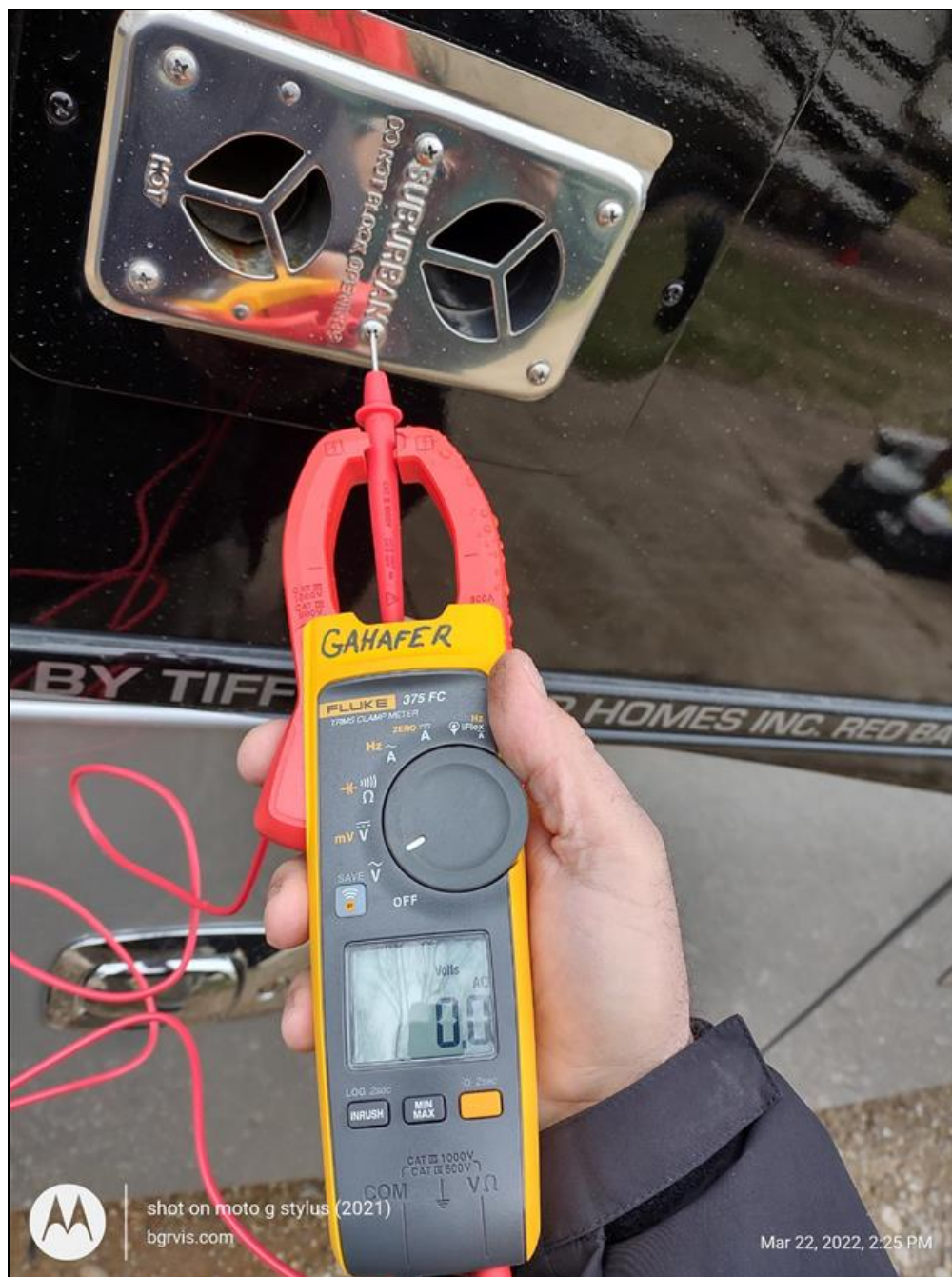
13.0 Hot Skin Test - Was any Frame and Running Gear Voltage Recorded

No

13.1 Hot Skin Test - Was any Exterior Wall Surface Voltage Recorded

No

Exterior wall furnace cover shows no voltage on the hot skin test.



Exterior wall Furnace Cover.

13.2 Hot Skin Test - Was any Door Handles and Frames Voltage Recorded

No

Entrance door handle shows no voltage on hot skin test.



Entrance door handle

13.3 Hot Skin Test - Was any Window Frames and Trim Voltage Recorded

No

13.4 Hot Skin Test - Was any Other Voltage Recorded

No

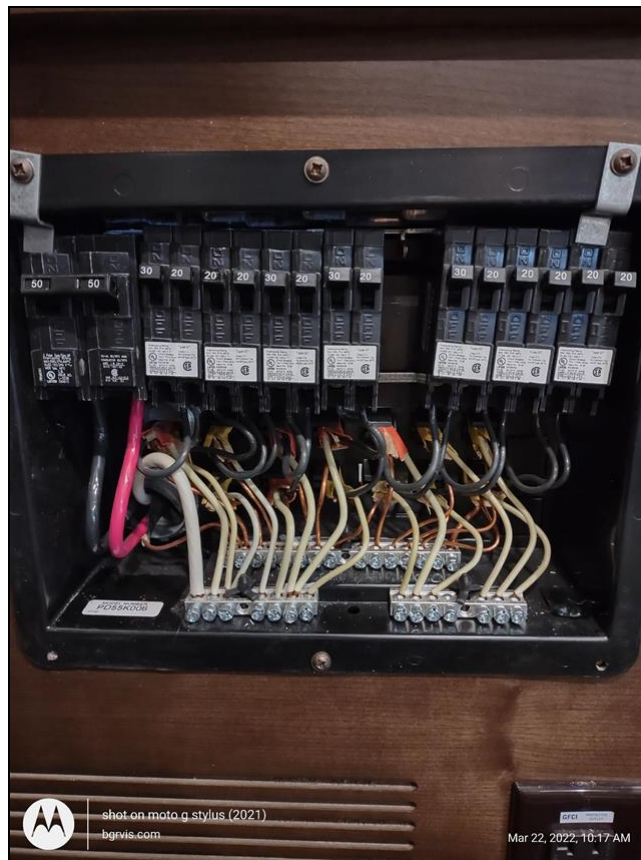
13.5 Power Cord Inspected

Yes

13.6 Electrical Panel Box - Signs of Repair or Service

No

Electrical panel is located in the bedroom.



Electrical panel

13.7 Electrical Panel Box - Circuit Breakers in Place

Yes

13.8 Electrical Panel Box - Wiring with Signs of Discoloration from Heat

No

13.9 Electrical Panel Box - Wiring Secure

Yes

13.10 Electrical Panel Box - All White, Black and Ground Wires Kept Separate

Yes

13.11 Fuse Panel Box Inspected

Yes

13.12 Polarity / Voltage Test - All Exterior Receptacles

Yes

13.13 Polarity / Voltage Test - Receptacles in Storage Bay Areas

Yes

13.14 Polarity / Voltage Test - Bedroom Receptacles

Yes

13.15 Polarity / Voltage Test - Receptacle Behind Refrigerator

Yes

13.16 Polarity / Voltage Test - Kitchen Receptacles

Yes

13.17 Polarity / Voltage Test - Living Room Receptacles

Yes

13.18 Polarity / Voltage Test - Dining Area Receptacles

Yes

13.19 Polarity / Voltage Test - Bath and Toilet Area Receptacles

Yes

13.20 Polarity / Voltage Test - Receptacles Behind all Electronics and Appliances

Yes

13.21 Voltage Test - USB Ports / 12-Volt Plugs

Yes

13.22 GFCI Trip Testing - Bathroom Receptacles

Yes

13.23 GFCI Trip Testing - Kitchen Receptacles

Yes

13.24 GFCI Trip Testing - Storage Bay Receptacles

Yes

13.25 GFCI Trip Testing - All Exterior Receptacles

Yes

13.26 GFCI Trip Testing - All Receptacles Behind Electronics and Appliances

Not Inspected

 Receptacles behind appliances not tested due to lack of accessibility.**13.27 Power Converter - Did DC Voltage Drop at Least 1/2 Volt**

Yes

13.28 Generator - Fuel Level Greater than 1/4 Tank

Yes

13.29 Generator - Inspected Oil Level

Yes

13.30 Generator - Starts and Runs

Yes

13.31 Generator - Tested Under Load

Yes

13.32 Generator - Radiator

Yes

13.33 Generator - Oil Analysis Performed

No

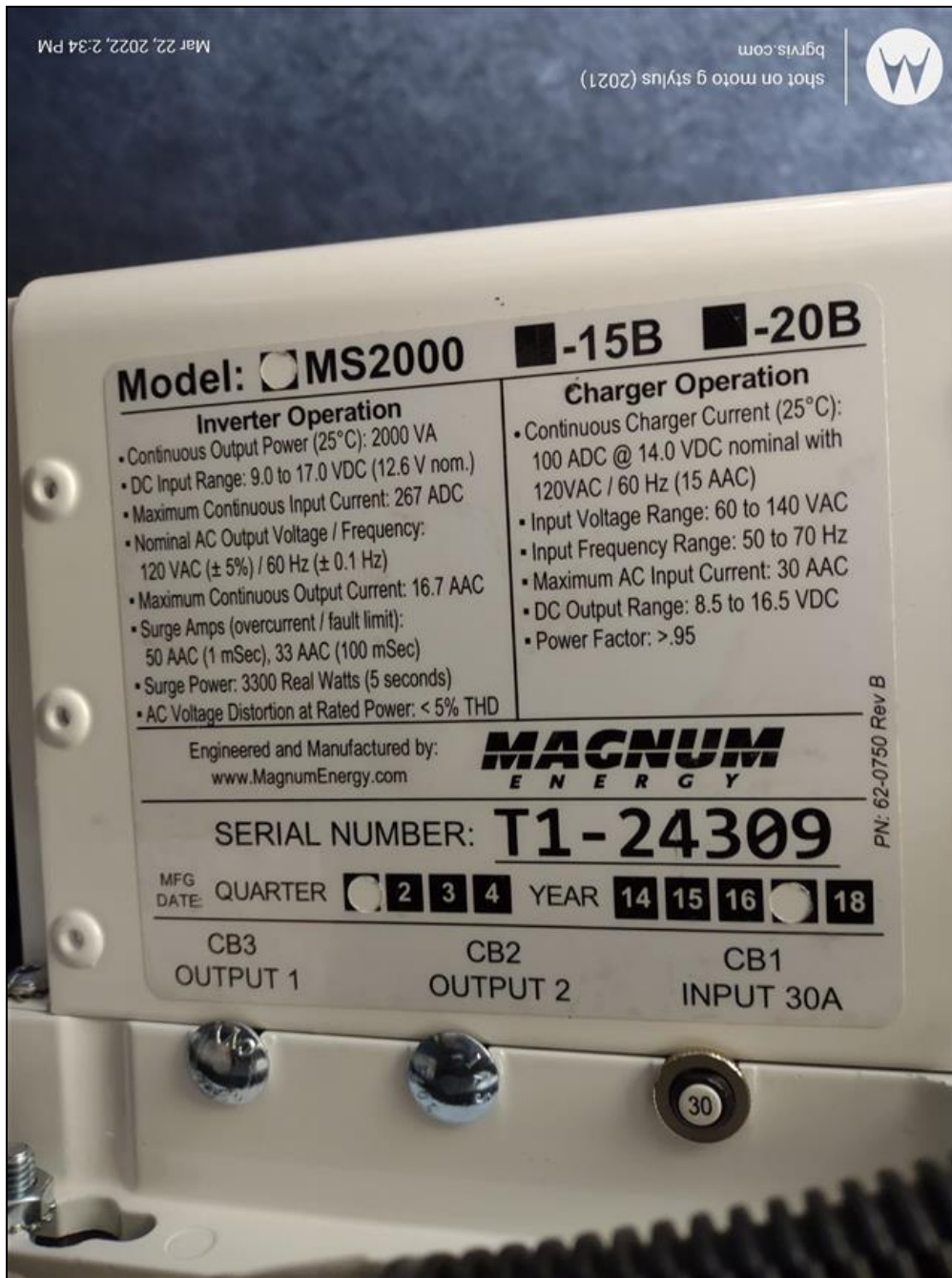
13.34 Generator - Coolant Analysis Performed

No

13.35 Inverter - Installed

Yes

Magnum MS2000 inverter installed in streetside basement cargo bay.



Magnum MS2000

13.36 Inverter - Inspected Cables, Wiring and Fuses

Yes

13.37 12 Volt DC House Battery(s) - Matched for Size and Age

Yes

House batteries are on a pullout tray.



House Batteries

13.38 12 Volt DC House Battery(s) - Positive and Negative Cables Matched for Load

Yes

13.39 12 Volt DC House Battery(s) - Have They Been Maintained?

Yes

13.40 12 Volt DC House Battery(s) - Operational

Yes

13.41 12 Volt DC House Battery - Water Level in Batteries

Not Inspected

🔍 Limited access to battery cells to check water level.

14. Water Systems

NOTE: Due to the inability to determine the age and quality of the water in the fresh water tank, the tank should be drained and sanitized before refilling for use.

NOTE: Due to the types of materials and waste used in the tanks and depending on previous maintenance, fresh and waste monitor sensor probes may perform inaccurately between applications due to build up.

Styles & Materials

City Water - Food Grade Hose Available for Test:
Yes

City Water - Pressure Regulator Available:
Yes

City Water - Connections Operate:
Yes

City Water - System Holds Pressure:
Yes

On-Board Water System - Tested Fresh Water Fill:
Yes

On-Board Water System - Pressure System Works:
Yes

On-Board Water System - Pump Creates and Holds Pressure:
Yes

Black Water Tank #1 - Valve Operates:
Yes

Black Water Tank #1 - Valve Type:
Cable Pull

Black Water Tank #1 - Tank or Valve or Line Leaks:
No

Black Water Tank #1 - Drain Cap in Place:
Yes

Black Water Tank #1 Drain Cap Holds Waste Water Back:
Yes

Gray Water Tank #1 - Valve Operates:
Yes

Gray Water Tank #1 - Valve Type:
Cable Pull

Gray Water Tank #1 - Tank or Valve or Line Leaks:
No

Gray Water Tank - Drain Cap in Place:
Yes

Gray Water Tank - Drain Cap Holds Gray Water Back:
Yes

Battery Monitor Reading:
Full

NOTE: The Following Readings Should be AFTER Emptying Tanks if Possible:
Results of the Test

Fresh Water Tank Reading:
2/3
Digital or Percentage Reading :
Percentage

Black Water Tank #1 Reading:
2/3
Digital or Percentage Reading :
Percentage

Items

14.0 Operation and Condition of Outside Shower

Acceptable

14.1 Onboard Water Filtration System

Acceptable

14.2 City Water Connection Condition

Acceptable

14.3 On-Board Water System: Tank, Water Pump and Fixtures for Tank Fill Condition

Acceptable

Wetbay in streetside bay.



Wetbay

14.4 Waste Water Sewer / Hose Fittings

Acceptable

14.5 Black Water Tank #1

Acceptable

14.6 Gray Water Tank #1

Acceptable

14.7 Battery / Waste / Water Monitor Panel Condition

Acceptable

15. Propane Tank, Lines and Connections

NOTE: CO Detectors have an estimated service life of 5 to 7 years after which time it is recommended they be replaced.

NOTE: LP Detectors have an estimated service life of 5 years after which time it is recommended they be replaced.

NOTE: Smoke Detectors have an estimated service life of 5 or 10 years after which time it is recommended they be replaced.

Styles & Materials

Propane ASME Tank:
Acceptable

Hoses and Regulators:
Acceptable

ASME - Location of the Tank:
Mounted Inside Frame Rails

ASME Tank Size:
Tank Size in Gallons
Number of Gallons : 35.9 gallons

ASME - Date of Manufacture:
Other
Other : Welded plate not accessible.

ASME - Cover over Regulator:
Yes

ASME - Regulator Vents Downward:
Not Visible

ASME - LP Shutoff Valve Installed:
Yes

ASME - Extend-A-Stay Valve Installed:
No

ASME - Signs of Rust or Damage:

LP Leak / Drop Test -:

No

Pass

LP Leak / Drop Test - Did Pressure Drop During Leak Test:
No

LP Leak / Drop Test - Begin Time:
Begin Time
Enter Start Time : 9:10AM

LP Leak / Drop Test - Completed Time:
Stop Time
Enter Stop Time : 9:16AM

LP Detector Test Result:
Pass

LP Detector Model / Serial Number:
Other
Other / Model / Serial : safe-t-alert

LP Detector Date:
Older than 5 Years (Replacement Recommended)
Date : April 5 2017

LP Detector Test Method:
Tested by Pushing Button and Spraying LP
Extra Info : working with test button but not by butane.

LP Detector Alarm During Test:
No

Carbon Monoxide Detector Test Result:
Fail

Carbon Monoxide Detector Model / Serial Number:
Other
Other : safe-t-alert

Carbon Monoxide Detector Date:
Older than 5 Years (Replacement Recommended)
Date : April 5 2017

Carbon Monoxide Detector Alarm During Test:
Yes, by Pushing the Button
Extra Info : But not with Butane

Smoke Detector Test Result:
Pass

Smoke Detector Model / Serial Number:
Kidde
Other : i9050,0009030

Smoke Detector Date:
Older than 5 Years (Replacement Recommended)
Date : November 22 2016

Smoke Detector Alarm During Test:
Yes, by Pushing the Button

Fire Extinguisher - Minimum 10 B:C Rating:
Yes

Fire Extinguisher - Secure in Bracket:
Yes

Fire Extinguisher - Mounted within 24 Inches of Entrance Door:
Yes

Fire Extinguisher - Gauge Indicates Charged State:
Yes

Items

15.0 ASME Tank

Acceptable

ASME welded tank label is not very accessible.



ASME welded tank label

15.1 LP Leak System Test

Acceptable

Propane system passed 5 minute leak drop test

15.2 LP Detector

Poor

 Failed to alarm on butane



LP Detector



LP Detector

15.3 Carbon Monoxide Detector

Poor

❌ Failed to alarm on butane



CO Detector



CO Detector

15.4 Smoke Detector

Acceptable

You smoke detector



smoke detector

15.5 Fire Extinguisher

Acceptable

Fire extinguisher 10 BC



Fire Extinguisher 10 BC

NOTE: CO Detectors have an estimated service life of 5 to 7 years after which time it is recommended they be replaced.

16. Appliances: Kitchen

NOTE: Refrigerators need to be on for a minimum of 12 to 24 hours to be at full cooling condition. This inspection may not reveal a problem if during the inspection the refrigerator was not on for the minimum recommended time.

Styles & Materials

Refrigerator Brand:
WHIRLPOOL
Model # and Serial # : WRF540CWB01,
K64521499

Refrigerator Type:
Residential

Refrigerator - Freezer Current Temperature:
Degrees F

Refrigerator - Has Unit been Running 12 + Hours:
Yes

Cooktop - Brand:
Atwood
Model # / Serial # / Specify Other : CV-
35BP, 52176-71499380

Cooktop - Rubber Grommets for Stovetop Grate:
Yes

Refrigerator Cooling Source(s):
120 Volts AC
Extra Info : residential refrigerator

Refrigerator - Control Panel Location:
Inside Door

Refrigerator - Odor Detectable in Freezer:
No

Refrigerator - Odor Detectable in Refrigerator:
No

Cooktop - All Burners Operate:
Yes

Cooktop - Burner Ignition Source:

Refrigerator - Operates on all Available Sources:
Yes
Extra Info : 38 degrees

Refrigerator - Door Latch Secure:
Yes

Refrigerator - Current Refrigerator Temperature:
Degrees F
Degrees : 40

Refrigerator - Does Inside Light Work:
Yes

Cooktop - Regulator Installed on Propane Line?:
Yes

Cooktop - All Burners Light:
Yes

Piezo Ignition - Turn Knob to Create a Spark

Cooktop - Cover Matches Countertop Material:
Yes

Microwave - Brand:
Other
Model # / Serial # / Specify Other :
Sharp R-1874TY, 511751

Microwave - Type:
Microwave / Convection
Output Wattage Rating : 850
watts

Microwave - Convection Mode - Fan Blower Comes On:
Yes

Convection Mode - Verified Temperature of 350 Degrees:
Yes
Extra Info : 350 degrees F

Microwave - Temperature of Water after 60 Seconds:
Degrees F
Degrees : 115

Microwave - Rack and Turntables are Installed:
Yes

Cooktop Exhaust Vent - Part of Microwave:
Yes

Cooktop Exhaust Vent - Venting:
Vents to Exterior

Items

16.0 Refrigerator - Control Board

Acceptable

Control board



Control Board

16.1 Refrigerator - Front Side Door Panels

Acceptable

Residential refrigerator



residential refrigerator



16.2 Refrigerator - Front Side Door Seals

Acceptable

16.3 Refrigerator - Front Side Door Frame

Acceptable

16.4 Refrigerator - Inside Freezer Walls

Acceptable

16.5 Refrigerator - Ice Maker

Acceptable

16.6 Refrigerator - Freezer Shelves / Door Racks

Acceptable

16.7 Refrigerator - Inside Walls

Acceptable

16.8 Refrigerator - Shelves / Door Racks

Acceptable

16.9 Refrigerator - Crisper Trays and Drawers

Acceptable

16.10 Cooktop - Condition

Acceptable

16.11 Cooktop - Condition of Knobs / Controls

Acceptable

16.12 Cooktop - Burner Grate / Cover Condition

Acceptable

16.13 Cooktop - Color of Burner Flame

Acceptable

Blue Flame on all burners



blue flame on all burners

16.14 Microwave - Condition

Acceptable

16.15 Cooktop Exhaust Vent - Filter and Lighting Condition

Acceptable

16.16 Cooktop Exhaust Vent - Fan Speeds and Vent Condition

Acceptable

17. Appliances: Other

Styles & Materials

Water Heater - Brand:

Atwood
Model # / Serial # / Specify Other : SW10DE,
171410291

Water Heater - Type:

Tank Type

Water Heater - Heat Source(s):

Gas and Electric

Water Heater - Operates on all Sources:

Yes

Water Heater - Type of Ignition:

DSI and Electric

Water Heater - Leaks at Pressure Relief Valve:

No

Water Heater - Proper Drain Plug Installed:

Yes

Water Heater - Bypass Valves in Correct Position:

Yes

Water Heater - Dauber Screens Installed:

No

Furnace - Brand:

Suburban

Furnace - Operates:

Yes

Furnace - Floor Vents or Outside Exhaust Vents Blocked or Covered:

Model # / Serial # :
SF30Q,171014909,SF35Q,171414264

No

Furnace - Warm Air Discharge Out of Vents - Proper Return Air Flow:
Yes

Furnace - Dauber Screens Installed:
No

Washer / Dryer - Type:
Single Units

Washer - Operational - Verify Wash and Rinse Cycle:
Yes

Dryer - Operational:
Yes

Washer - Signs of Leaks or Damaged Hoses:
No

In-House Vacuum System - Brand:
Other
Model # / Serial # / Specify Other : Intervac, RV120

In-House Vacuum System - Operational:
Yes

Electric Fireplace - Brand:
Other
Model # / Serial # / Specify Other : Unknown

Electric Fireplace - Results of Operation:
All Features Work

Ceiling Fan - Operation - Blade Direction - Fan Speed:
All Features Work

Items

17.0 Water Heater - Condition of Burner Assembly Area

Acceptable

Suburban gas electric water heater



water heater



17.1 Water Heater - Rubber Grommet Around Gas Line Sealed

Acceptable

17.2 Furnace #1 Air Intake / Exhaust Area Condition

Acceptable

Front furnace



Front Furnace

17.3 Furnace #2 Air Intake / Exhaust Area Condition

Acceptable

Rear Furnace



Rear Furnace

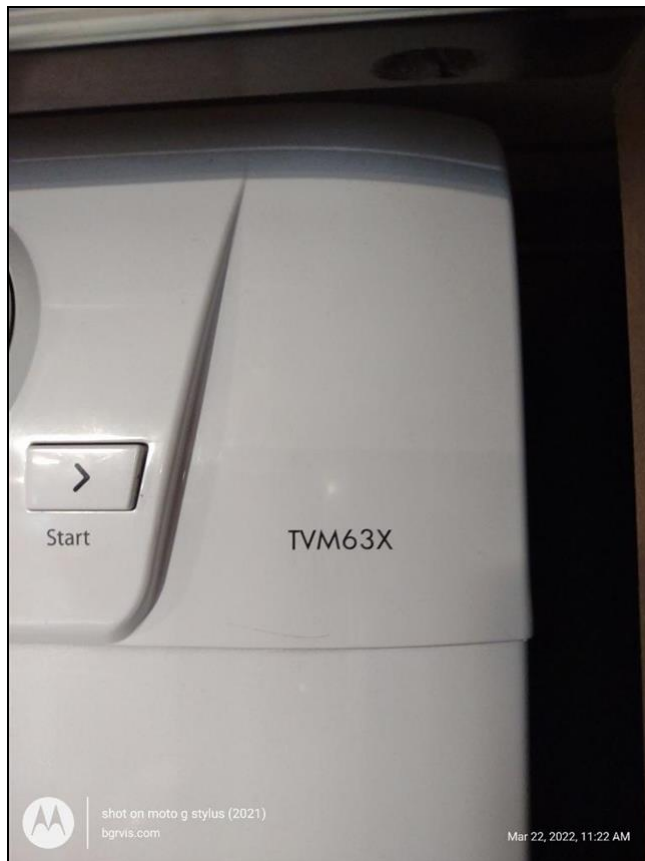
17.4 Washer / Dryer - Condition

Acceptable

Splendide stackable washer dryer is located in the bedroom.



Stacked washer dryer





17.5 Washer / Dryer - Vent Condition

Acceptable

17.6 In-House Vacuum System - Condition of Unit / Accessories / Bag

Acceptable

17.7 Electric Fireplace - Condition

Acceptable

Electric fireplace located in the living area.



Electric fireplace

17.8 Ceiling Fan - Condition of Motor, Blades, Lighting

Acceptable

Ceiling fan in the bedroom.



ceiling fan

18(A) . Air Conditioner #1

NOTE: The Delta-T average acceptable performance range is 14 to 22 degrees F (-10 to -5 degrees C). In high humidity areas the range may be lower (12 to 16 degrees F) (-11 to -9 degrees C) and in desert areas, it may be higher (23 to 26 degrees F) (-5 to -3 degrees C).

Styles & Materials

Air Conditioner - Brand:

Coleman
 Model # / Serial # / Specify Other : 47273A879,
 170423193

Air Conditioner - Thermostatic

Controls:
 Dual with Furnace
 Zoned

Air Conditioner -

Options:
 Heat Pump

Air Conditioner - Delta-T:

Degrees F
 Degrees : 20 degrees

Items

18.0.A Air Conditioner Condition

Acceptable

Air conditioner #1 showing a delta T of 20 degrees fahrenheit.



Temperature out



Inlet temperature

18.1.A Air Conditioner - Filter Condition

Acceptable

18.2.A Air Conditioner - Exhaust Condition

Acceptable

18(B) . Air Conditioner #2

NOTE: The Delta-T average acceptable performance range is 14 to 22 degrees F (-10 to -5 degrees C). In high humidity areas the range may be lower (12 to 16 degrees F) (-11 to -9 degrees C) and in desert areas, it may be higher (23 to 26 degrees F) (-5 to -3 degrees C).

Styles & Materials

Air Conditioner - Brand:

Coleman
Model # / Serial # / Specify Other : 47074A879

Air Conditioner - Thermostatic Controls:

Dual with Furnace
Zoned

Air Conditioner - Options:

Heat Pump

Air Conditioner - Delta-T:

Degrees F
Degrees : 20 degrees

Items

18.0.B Air Conditioner Condition

Acceptable

18.1.B Air Conditioner - Filter Condition

Acceptable

18.2.B Air Conditioner - Exhaust Condition

Acceptable

18(C) . Air Conditioner #3

NOTE: The Delta-T average acceptable performance range is 14 to 22 degrees F (-10 to -5 degrees C). In high humidity areas the range may be lower (12 to 16 degrees F) (-11 to -9 degrees C) and in desert areas, it may be higher (23 to 26 degrees F) (-5 to -3 degrees C).

Styles & Materials

Air Conditioner - Brand:
Coleman

Air Conditioner - Thermostatic Controls:
Dual with Furnace
Zoned

Air Conditioner - Options:
Heat Pump

Air Conditioner - Delta-T:
Degrees F
Degrees : 20 degrees

Items

18.0.C Air Conditioner Condition

Acceptable

18.1.C Air Conditioner - Filter Condition

Acceptable

18.2.C Air Conditioner - Exhaust Condition

Acceptable

19. Interior



Living area looking towards the front



Living area looking towards the kitchen and bedroom.



Washer dryer in the bedroom.



Bedroom view



Bedroom view



bedroom dresser storage



Double bowl vanity in the full bath



Residential size shower.



Porcelain foot flush toilet

Styles & Materials

Ceiling - Condition:
Acceptable

Lights and Light Fixtures - Condition:
Acceptable

Closets and Pantries - Condition:
Acceptable

Kitchen Sink - Condition:
Acceptable

Shower / Tub - Condition:
Acceptable

Bathroom Sink - Condition:
Acceptable

Ceiling Vents and Skylights - Condition:
Acceptable

Walls - Condition:
Acceptable

Windows - Condition:
Acceptable

Kitchen Sink - Style:
Double Bowl

Shower / Tub - Style:
Shower Stall

Bathroom Sink - Style:
Double Bowl

Ceiling Vents and Skylights - Trim Ring Around Vents and Skylights:
Acceptable

Walls - Interior Doors Condition:
Acceptable

Flooring - Condition:
Acceptable

Kitchen Sink - Type:
Stainless

Shower / Tub - Door and Frame and Seals Condition:
Acceptable

Bathroom Sink - Type:
Porcelain

Items

19.0 Ceiling Inspected

Yes

19.1 Ceiling - Panels Loose

Yes

19.2 Ceiling - Water Damaged Ceiling Panels

No

19.3

Ceiling - Discoloration or Stains

No

19.4 Ceiling - Trim Work Missing or Damaged

No

19.5 Ceiling Vents and Skylights - Thermostatic Controls and Switches Work

Yes

19.6 Ceiling Vents - All 12-Volt DC Fans Operate

Yes

19.7 Ceiling Vents and Skylights - Stains Around Roof Vents and Skylights

No

19.8 Lights and Light Fixtures - Do all 12-Volt DC Lights Function

Yes

19.9 Lights and Light Fixtures - Wall Mounted Light Fixtures

Yes

19.10 Lights and Light Fixtures - Entry Lights inside RV

Yes

19.11 Lights and Light Fixtures - Missing or Broken Lenses

No

19.12 Lights and Light Fixtures - Missing Shades or Broken Covers

No

19.13 Walls Inspected

Yes

19.14 Walls - Panels Loose

No

19.15 Walls - Water Damaged Wall Panels

No

19.16 Walls - Panels Discolored or Stained

No

19.17 Walls - Soft Spots on Walls

No

19.18 Walls - Trim Work on Walls

Yes

19.19 Walls - Damage Repairs Performed

No

19.20 Walls - Holes or Wall Repairs

No

19.21 Closets / Pantries Inspected

Yes

19.22 Closets and Pantries - Door Damage / Scratches

No

19.23 Closets and Pantries - Wood Rot or Broken

No

19.24

Closets and Pantries - Drawer Damage / Scratches

No

19.25 Windows - All Windows Operational

Yes

19.26 Windows - Window Coverings

Yes

19.27 Windows - Emergency Exit Windows Installed

Yes

19.28 Windows - Emergency Exit Windows Operational

Yes

19.29 Flooring - Sheet Vinyl

No

19.30 Flooring - Carpet

Yes

19.31 Flooring - Ceramic Tile

Yes

19.32 Flooring - Floor Panels Loose

No

19.33 Flooring - Floor Covering Discolored or Stained

No

19.34 Flooring - Water Damage

No

19.35 Flooring - Carpet Worn

No

19.36 Flooring - Soft Spots in Floor

No

19.37 Flooring - Previous Repairs Performed

No

19.38 Operation and Condition of Kitchen Faucet

Yes

19.39 Kitchen Sink - Faucet Working

Yes

19.40 Kitchen Sink - Faucet Leaks at Stem

No

19.41 Kitchen Sink - Water Damage Under Sink

No

19.42 Kitchen Sink - P-Trap Holds Water

Yes

19.43 Kitchen Sink - Sink(s) Holds Water

Yes

19.44 Kitchen Sink - Hot and Cold Water Available

Yes

19.45

Operation and Condition of Toilet

Yes

19.46 Toilet - Water Leaks

No

19.47 Toilet - Indication of Previous Damage or Repair

No

19.48 Toilet - Bowl Holds Water

Yes

19.49 Toilet - Mounting Problems

No

19.50 Operation and Condition of Shower

Yes

19.51 Shower / Tub - Stains, Chemical Buildup in Stall / Tub

No

19.52 Shower / Tub - Water Damage or Leaks

No

19.53 Shower / Tub - Glass Doors

Yes

19.54 Shower / Tub - Soap Dish in Place

Yes

19.55 Shower / Tub - Door Latch Functioning

Yes

19.56 Shower / Tub - Towel Racks in Place

Yes

19.57 Operation and Condition of Bathroom Faucet

Yes

19.58 Bathroom Sink - Faucet Working

Yes

19.59 Bathroom Sink - Faucet Leaks at Stem

No

19.60 Bathroom Sink - Water Damage Under Sink

No

19.61 Bathroom Sink - P-Trap Holds Water

Yes

19.62 Bathroom Sink - Sink(s) Holds Water

Yes

19.63 Bathroom Sink - Hot and Cold Water Available

Yes

20. Furniture

Styles & Materials

Chairs - Condition:
Acceptable

Sofa - Condition:
Acceptable

Dinette / Table / Chairs - Condition:
Acceptable

Beds - Condition:
Acceptable

Cabinets / Dressers - Condition:
Acceptable

Cabinets / Dressers - Types of Hinges:
Hidden

Cabinets / Closet Hardware - Condition:
Acceptable

Items

20.0 Chairs Inspected

Yes

20.1 Chairs - Fabric Tears or Separation

No

20.2 Chairs - Fabric Discolored or Stains

No

20.3 Chairs - Signs of Excess Wear

No

20.4 Chairs - Water Damage

No

20.5 Sofa(s) Inspected

Yes

20.6 Sofa - Fabric Tears or Separation

No

20.7 Sofa - Fabric Discolored or Stains

No

20.8 Sofa - Signs of Excess Wear

No

20.9 Sofa - Water Damage

No

20.10 Dinette / Table / Chairs Inspected

Yes

20.11 Dinette / Table / Chairs - Fabric Tears or Separation

No

20.12 Dinette / Table / Chairs - Fabric Discolored or Stains

No

20.13 Dinette / Table / Chairs - Signs of Excess Wear

No

20.14 Dinette / Table / Chairs - Water Damage

No

20.15 Dinette / Table / Chairs - Previous Repairs Performed

No

20.16 Beds Inspected

Yes

20.17 Beds - Fabric Tears or Separation

No

20.18 Beds - Fabric Discolored or Stains

No

20.19 Beds - Signs of Excess Wear

No

20.20 Beds - Pillow Top Mattress

Yes

20.21 Beds - Bed Covers

Yes

20.22 Beds - Covers Match Decor

Yes

20.23 Cabinets / Dressers Inspected

Yes

20.24 Cabinets / Dressers - Door Damage or Scratches

No

20.25 Cabinets / Dressers - Counter Top Damage or Scratches

No

20.26 Cabinets / Dressers - Wood Rot or Broken

No

20.27 Cabinets / Dressers - Drawer Damage or Scratches

No

20.28 Cabinet Doors / Drawers - Pull-Out Operation Acceptable

Yes

20.29 Cabinet Doors / Drawers - Previous Repairs Performed

No

21(A) . TV #1

Styles & Materials

Unit Brand:

LG

Model # / Other Specify : LG 43LH5700

Antenna Power Booster Operates:

Yes

TV Picks Up Local Channels:

Yes

Remotes Operational:

Yes

Items

21.0.A Unit Works Properly

Yes

LG 43-in TV



LG 43 INCH TV

21.1.A Unit Cleaned and Maintained

Yes

21.2.A Unit Properly Mounted and Secured

Yes

21(B) . TV #2

Styles & Materials

Unit Brand:

LG

Model # / Other Specify : LG 43LH5700

Antenna Power Booster Operates:

Yes

TV Picks Up Local Channels:

Yes

Remotes Operational:

Yes

Items

21.0.B Unit Works Properly

Yes

LG 43-in TV



LG 43 INCH TV

21.1.B Unit Cleaned and Maintained

Yes

21.2.B Unit Properly Mounted and Secured

Yes

21(C) . TV #3

Styles & Materials

Unit Brand:

LG
Model # / Other Specify : LG 43LH5700

Antenna Power Booster Operates:

Yes

TV Picks Up Local Channels:

Yes

Remotes Operational:

Yes

Items

21.0.C Unit Works Properly

Yes

LG 43-in TV



LG 43 INCH TV

21.1.C Unit Cleaned and Maintained

Yes

21.2.C Unit Properly Mounted and Secured

Yes

21(D) . TV #4

Styles & Materials

Unit Brand:

LG
Model # / Other Specify : LG 32LH570B

Antenna Power Booster Operates:

Yes

TV Picks Up Local Channels:

Yes

Remotes Operational:

Yes

Items

21.0.D Unit Works Properly

Yes

LG 32-in TV



LG 32 INCH TV

21.1.D Unit Cleaned and Maintained

Yes

21.2.D Unit Properly Mounted and Secured

Yes

21(E) . Blu Ray #1

Styles & Materials

Unit Brand:

LG

Model # / Other Specify :

BH6730S

Antenna Power Booster Operates:

Not Inspected

Extra Info : Blue ray Player Does Not Have a Antenna Power Booster

TV Picks Up Local Channels:

No

Remotes Operational:

Yes

Items

21.0.E Unit Works Properly

Yes

LG Blu-ray player



LG BLUE RAY

21.1.E Unit Cleaned and Maintained

Yes

21.2.E Unit Properly Mounted and Secured

Yes